

Shear Nut

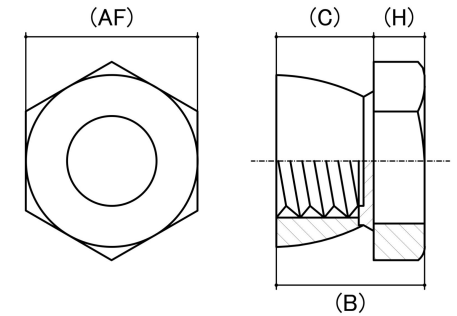
Thread Type: Metric - Coarse

Thread Direction: Right Hand

Material: Stainless Steel

Class Grade: A4-70 G316

Corrosion Protection Level: Ultimate



*CAD drawings shown for graphic representation only.**

Size	Thread Pitch (mm)	Thread Type	Overall Nut Height (B) (mm)	Hex Height (H) (mm)	Cone Height (C) (mm)	Across Flats (AF) (mm)		Spanner Size (AF) (mm)	sku (qfind)
			Nom	Nom	Nom	Min	Max		
M6	1.00	Coarse	9.50	3.50	6.00	9.78	10.00	10	41SHS6M
M8	1.25	Coarse	12.00	4.00	8.00	12.73	13.00	13	41SHS8M
M10	1.50	Coarse	15.00	5.00	10.00	16.73	17.00	17	41SHS10M
M12	1.75	Coarse	16.00	5.50	10.50	18.73	19.00	19	41SHS12M

Disclaimer:

Dimensional data and technical information was obtained from publically available sources and not acquired through standard agencies. It has been completed and compiled for reference purposes only; where discrepancies are found they are subject to change without notice. Bolt & Nut Australia makes no warranties or representations regarding the accuracy and validity of the compiled information and data. Contact the relevant standard authorities for accurate and detailed information.

* CAD drawings may not reflect diameter, thread length or overall length.

© Bolt & Nut Australia Pty Ltd. All rights reserved.

Version: 18 Mar 2024